

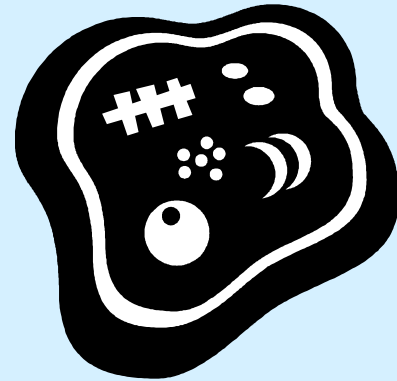


Scotland County Schools

Bloodborne Pathogen Training

What is a Bloodborne Pathogen?

- Microorganism found in blood or body fluids that can cause diseases in humans



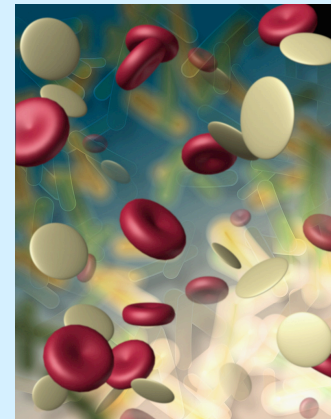


What are some Bloodborne Pathogens?

- **HIV**-Is the virus that causes AIDS. It attacks the immune system destroying the ability to fight infections. There is no vaccine to prevent infection and there is not a cure for AIDS
- **Hepatitis B and C**-These viruses cause liver infections that can lead to chronic liver disease, liver cancer or death

How do I get exposed to a Bloodborne Pathogen?

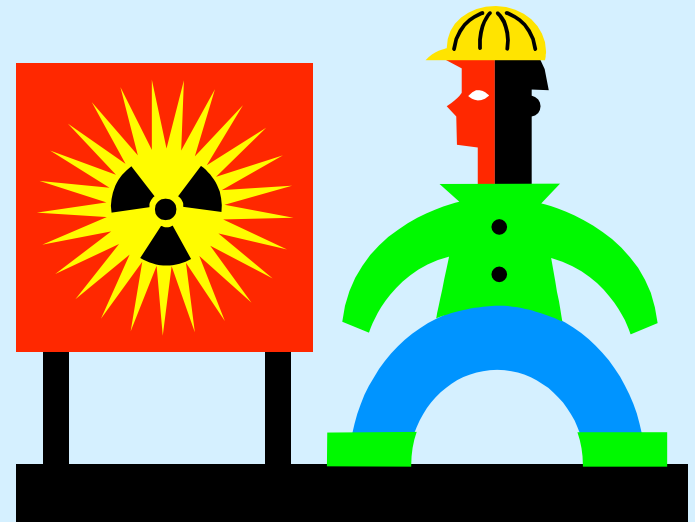
- When broken skin, mucus membranes or eyes come in contact with blood or body fluids



What are Universal Precautions?

Guidelines to be followed to prevent an exposure to Bloodborne Pathogens:

- ***You should treat all blood and body fluids as if infected with a Bloodborne Pathogen.***



Who is at Risk?

- School First Responders
- School Nurses
- Custodians
- Administration (likely to break up fights)
- Coaches/Athletic Trainers
- Physical Education Teachers



Who is at Risk?

- Teachers and Bus Drivers of severe and profound exceptional children
- Vocational Teachers working in machinery
- Maintenance Personnel working with plumbing



Protective Equipment

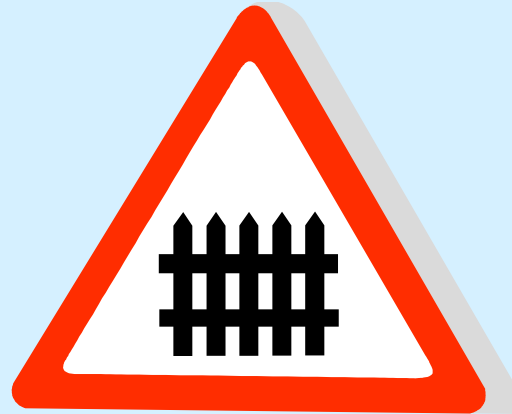
- Protective Equipment Used to Clean Up a Blood or Body Fluid Spill
 - Gloves
 - Gown
 - Red Biohazard Bags
- Contaminated Sharp items go in **Red** Sharps Container
- Disinfectant is used on the spill



ALL supplies are found in Bloodborne Pathogens box located in the healthroom/nurse's office

Protective Barriers

- When to Use Protective Barrier
 - Potential for Blood or Body Fluid Exposure



Protective Barrier

- If Protective Barrier not used when appropriate:
 - Reported to principal or supervisor
 - Investigation of the incident
 - Could result in disciplinary action

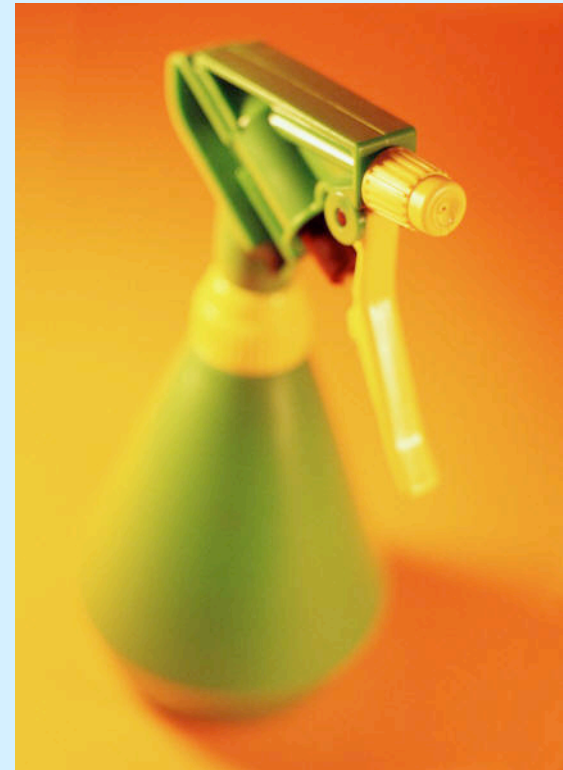


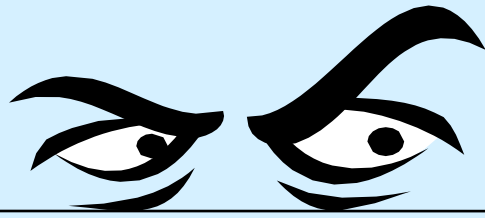
Disposal of Protective Barriers

- Any material contaminated with blood or body fluids that is drippable or squeezable should be put in medical waste labeled trash bags found in the healthroom/nurse's office.

Disinfection/Sterilization

- Disinfectant registered with US Environmental Protection Agency is available in every school office
- Contaminated glass will be cleaned using a mechanical means (brush and pan) and discarded in a closeable puncture resistant container





Compliance Monitoring is done by
Principal or Supervisor by...

- A. Problem Follow-Up
- B. Safety Reports
- C. Direct Observation
- D. Walking Rounds
- E. Indirect Observation

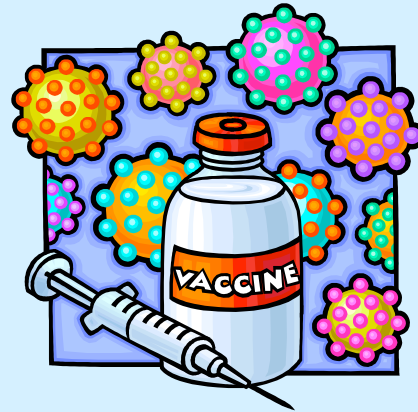
Noncompliance

Noncompliance Reported to:

- School Health Coordinator
 - Director of Student Support Services
 - Associate Superintendent of Administrative Services
-
- ❖ May result in Corrective Action Plan

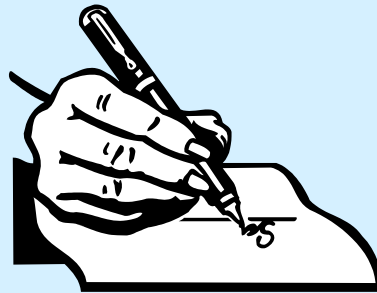
Hepatitis B Vaccine

Hepatitis B Vaccine available at no cost for system employees at high risk of exposure as previously defined



Refusal of Vaccine

You must sign a waiver if considered high risk and refuse Hepatitis B Vaccine





Staff Member Exposure

- Report to School Nurse or School Health Coordinator
- Complete Incident Report Form
- Seek Treatment at Occupational Health at Scotland Memorial Hospital



Where Can I Read Our School System Exposure Control Plan?

- The office of the school nurse

ANY QUESTIONS?

Contact your School Nurse

Or

Gina Stocks

School Health Coordinator

gstocks@scsnc.org

Test Time

Now, Take the attached test and turn it into your school nurse or Gina Stocks at Washington Park School.

